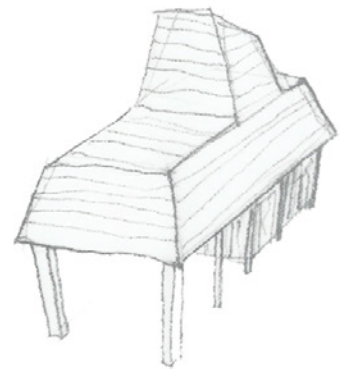
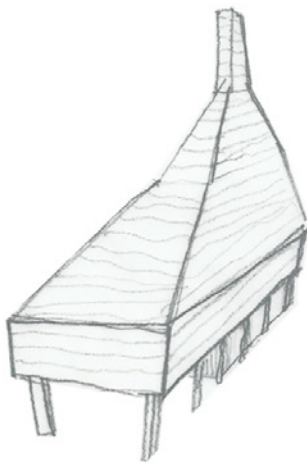


Recipe for a Shed



Grizedale Arts, 2020

Concept ideas for Lawson Park's Paddies

The following pages set out a series of sketch ideas that Studio B submitted to Grizedale Arts for a shed in The Paddies - a section of experimental garden that is part of the wider Lawson Park site in Coniston, Cumbria.

The Paddies were first landscaped from a steep, deer-fenced but uncultivated section of land in early 2007, laid out with the rice farmers of the Japanese village of Toge, who were visiting Lawson Park as part of the Grizedale Arts Seven Samurai project.

We proposed the following democratic and discursive design approach towards the making of a shed, that would hold all the garden sundries, tools and bits and bobs needed for this large productive area of garden. The following pages offer up both design ideas and an approach to the project.

Here is a space
measured out and dug
and raked and planted,
set out with rice farmer
friends, who visited from
the mountain village of Toge, Japan.



Lawson Park supports planting
and growing, making and
volunteering.

Here are the polytunnels,
the farmhouse garden, the union
orchard, the wildflower meadow, the
kitchen garden, the woodland garden,
the bog garden, the nuttery and the
pond.

Here is **equipment** that needs to be
stored in the new shed
in The Paddies.

Here is a palette of possible **materials.**

Inspired by a meeting of readily available, traditional Cumbrian materials, combined with admiration of Japanese construction and craft.



Slate



Rough Cut Shingles



Carbonised Timber
(Japanese - *shou sugi ban*)

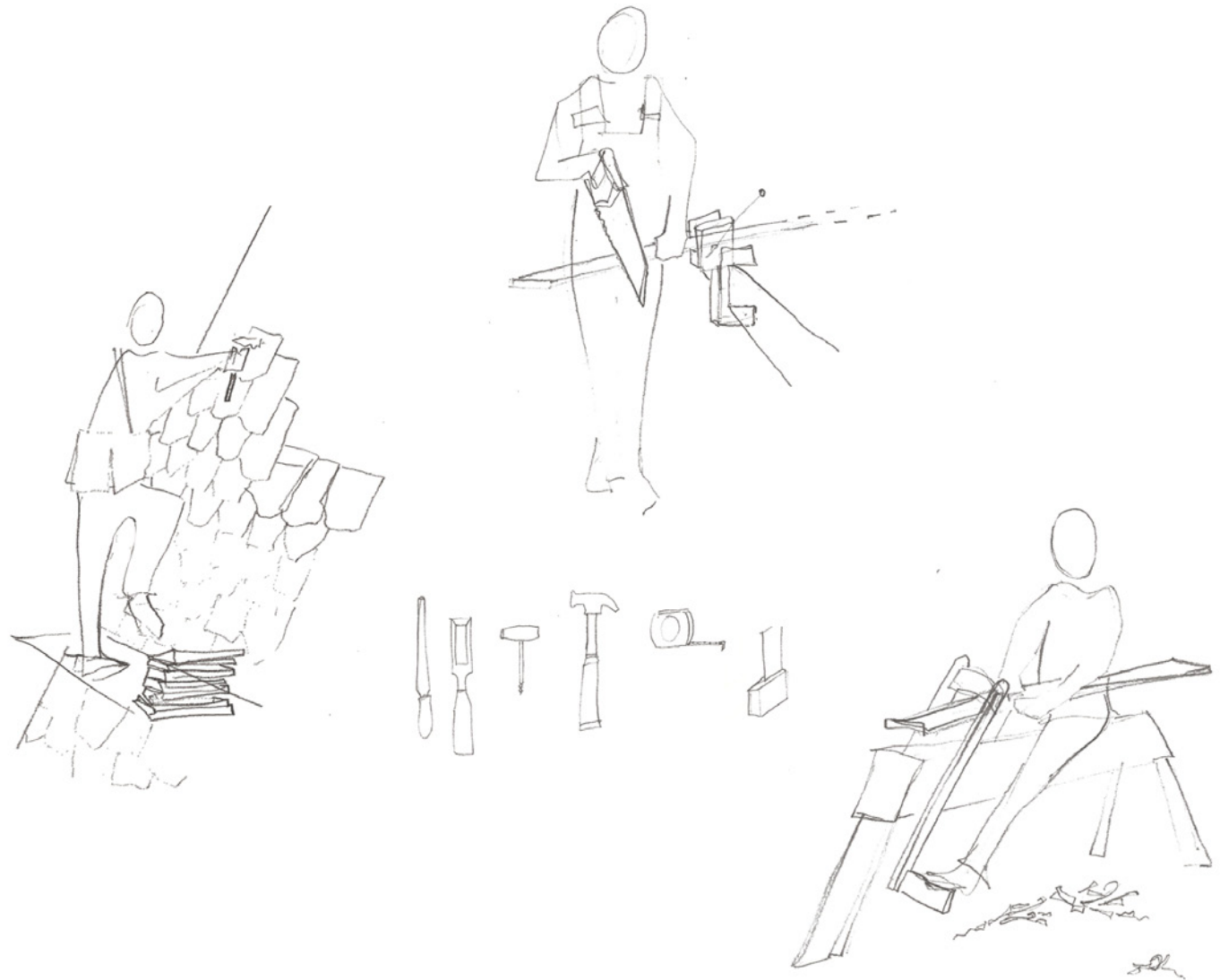
Here is
slate
rough cut, hand cut timber shingles
carbonised timber, charred to form
a water proof layer from the rain - this
technique known in Japan as
'*shou sugi ban*'

Here are **craftspeople**, who hold the knowledge needed to transform raw materials, into parts of a small, new building.

The techniques of the craftspeople will define the making of the tool shed at Grizedale.

The expertise of fabricators will help support the design to be suitable to this place, and to be built collectively with a diverse team, with a range of skills.

Our proposal plants their knowledge at the centre of realising the shed.



Here are people, sharing thoughts, offering **helping hands**.

Each with their own knowledge and experiences.

Their knowledge is a tool-kit.

They bring

insights

suggestions

skills

Process.

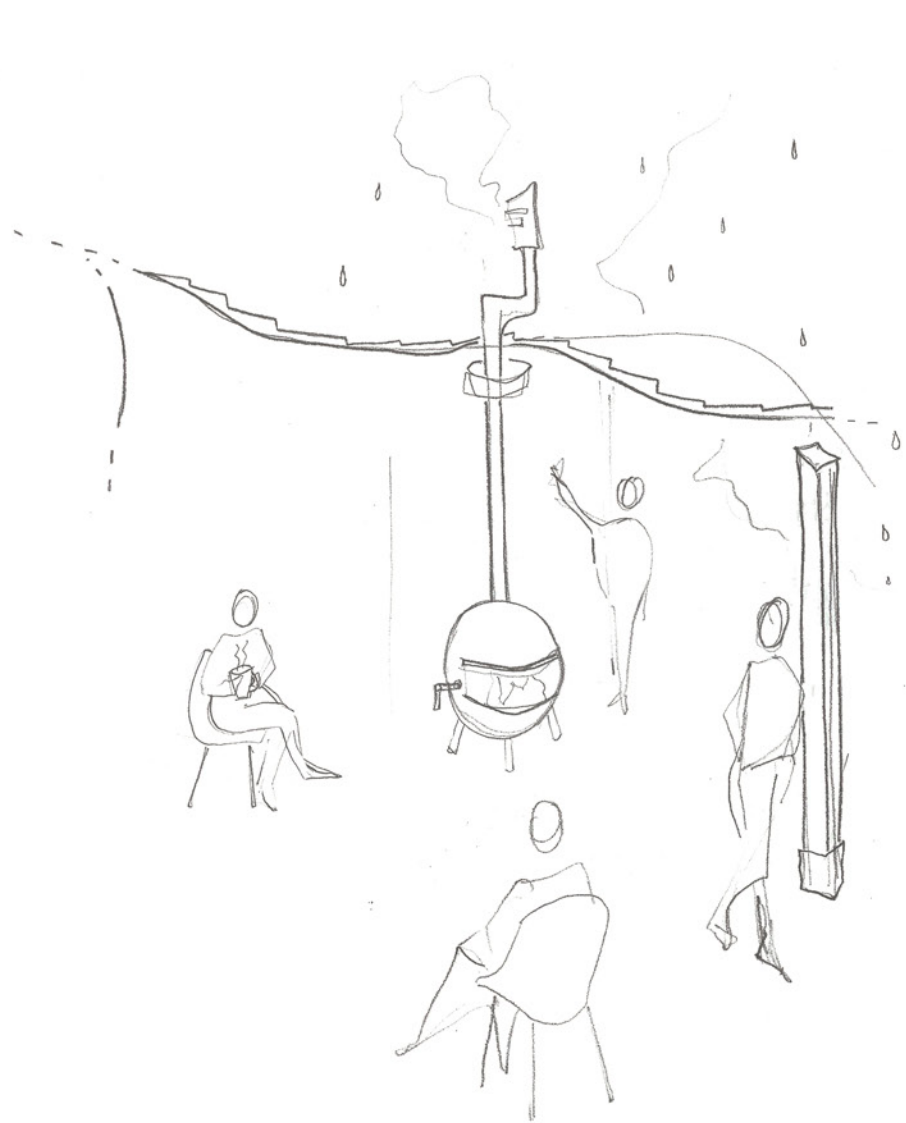
People gather

with cups of tea

around a stove

sharing ideas.

Outside it is raining.



It needs to be this big

From here, to here

We need a place to store the wheelbarrows

We could make the frame out of the timber grown here

I can show everyone how to make the shingles

Shall we use timber shingles, or slates?

Here are **inspirations**,
to borrow and mould,
and apply to something
that is both
old and new.

A nod to Japan,
their culture and craft.

A mix of Cumbrian materials
and skills.

Wood
Shingles
and a
Hat for a Roof

A tool store beneath,
the structure made from timber and
Warmed by a stove.



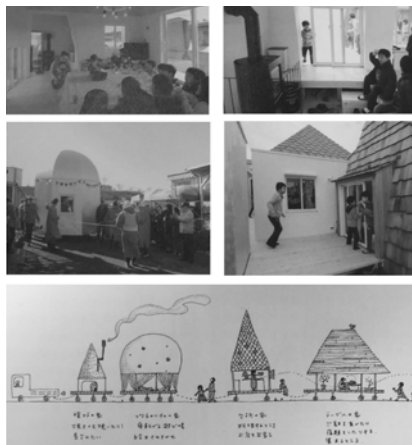
Charred Timber Shingles



HOME - FOR - ALL by Toyo Ito
for fishermen in Kamaishi



Takasugi-an by Terunobu Fujimori
Tea house in Chino, Nagano
Prefecture, Japan



HOME - FOR - ALL by Toyo Ito
for children in Higashimatsushima



Wabi-Sabi for Artists, Designers,
Poets & Philosophers
by Leonard Koren



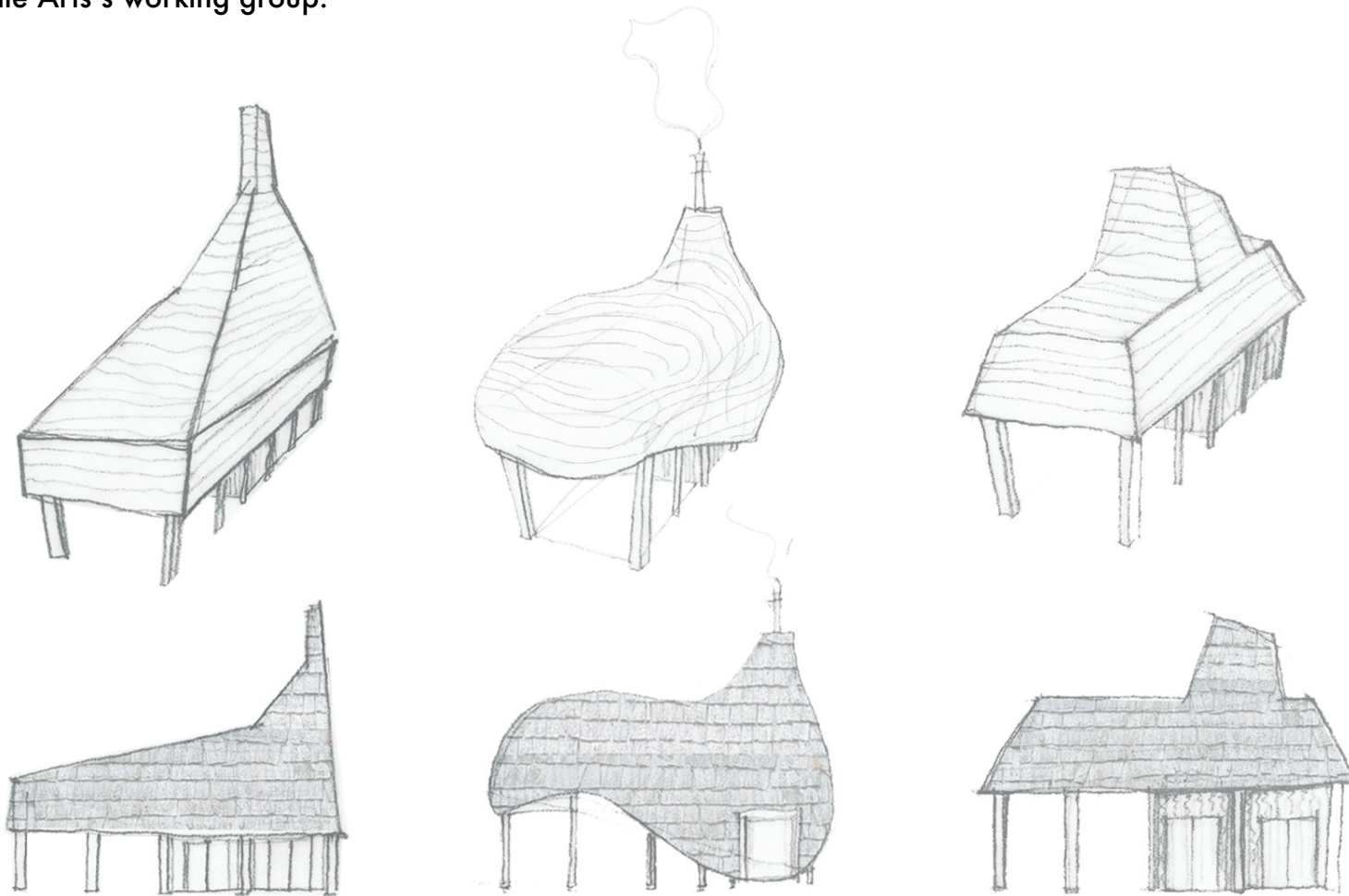
Nature + Texture

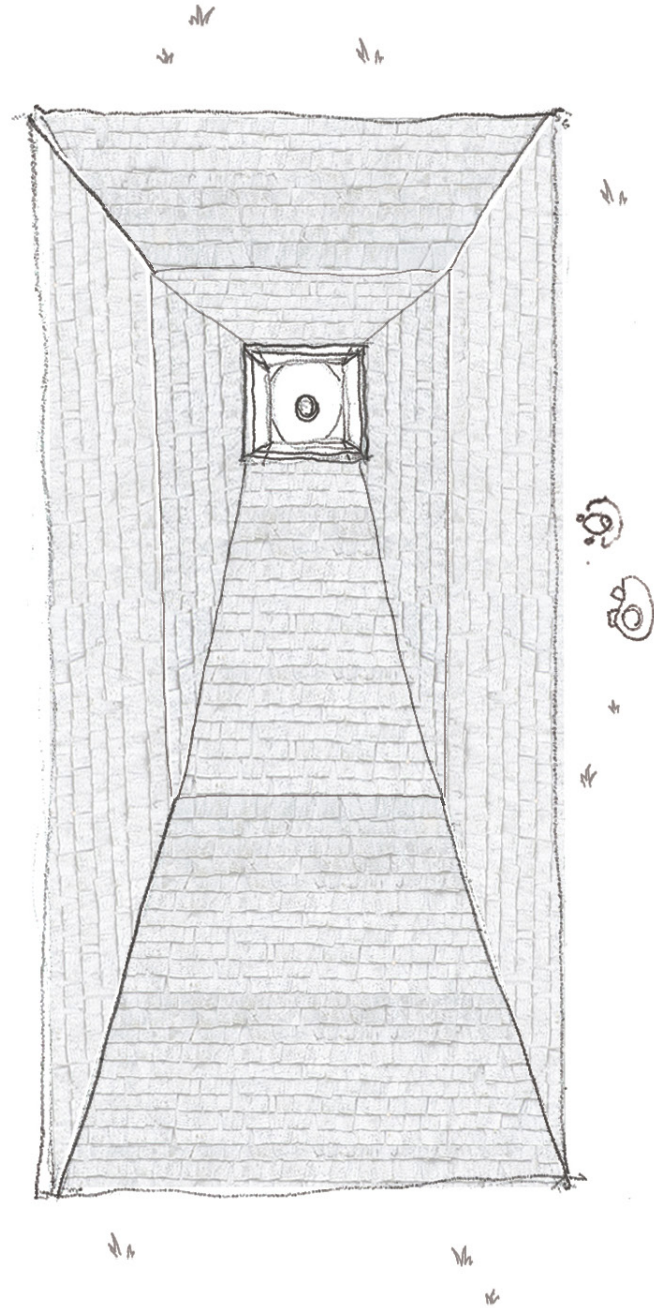
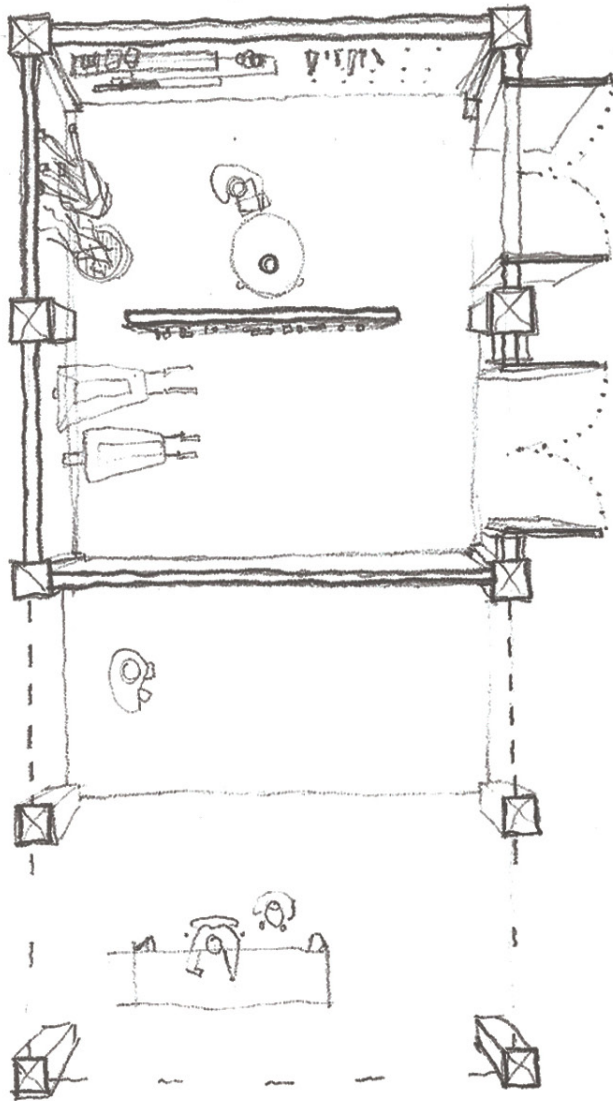
We are offering up a **recipe** for a humble yet playful shed.

This proposal is based not on a final design,

but instead suggests a process - that integrates appropriate materials, interlaced with the knowledge of fabricators, to together undertake a discursive and hands-on participatory approach to the design that allows space for people to bring their own ideas into the final solution.

As such, Studio B is not putting forward a final, fixed proposition. Rather we are proposing an attitude to this project that embraces a personable, joyful, and communal approach. The ideas set out here are intended as starting points of inspiration, that would be collectively evolved with Grizedale Arts's working group.







This set of design ideas was submitted to to Grizedale Arts, June 2020
Words by Studio Berman